



AIRCRAFT

LANDING MAT



**The alternative to concrete
runways**

TRACKWAY[®] SOLUTIONS

A modular aluminium panel system that is the perfect alternative solution to concrete or asphalt runways. This innovative product allows expeditionary forces to build runways, taxiways and parking areas in scenarios where there is no time, requirement or ability to install a permanent airfield. Designed to any size requirement, the Aircraft Landing Mat can be used for as little as a day or as a permanent installation and can be deployed quickly for immediate use. Reusable for multi-operations, the system is available in a variety of Trackway[®] panel profiles, each suited to a group of aircraft and requirement, ensuring maximum usability.

CAPABILITIES & SPECIFICATION

Provides temporary or semi-permanent matting;

Ensures ground / environmental protection;

Prevents Foreign Object Damage (FOD);

Alleviate brown out by suppressing dust and airborne debris;

Facilitates multiple landings at the same location;

Easily and safely deployed and recovered.

Aluminium panels, joined together to any size requirement, and anchored to the ground;

Designed to be constantly reused for multi-purpose operations;

Withstands ambient temperatures ranging from -40°C to +60°C;

Anodised or painted as standard dependent on the panel profile;

Easily cleaned, has a long operational life and is 100% recyclable;

Foot protection is required for walking on all Trackway[®] aluminium products.



PSA FLAT TOP N TRACKWAY®

PSA Flat Top N Trackway®'s innovative design allows two panels to be stacked into a combined state of 1.1in; allowing for an increased square footage, due to the unique nesting function. Transportable on 463L pallets, in ISO Containers, or the Multi Role Packaging solution, the panel is supplied anodised for durability and protection from corrosion; and an anti-skid finish ensures the surface is of the highest traction for asset and personnel safety. Suitable for landing, take-off, servicing and maintenance, its flat surface makes the ideal solution for helicopter parking zones, and its structurally sound yet flexible foundation ideal for supporting VTOL / STOVL operations.

		Full Panel	Edge Panel
✓	Width:	2,255mm (7ft 4½ in)	890mm (2ft 11 in)
✓	Overall Length:	265mm (11 in)	265mm (11 in)
✓	Effective Length:	255mm (10 in)	255mm (10 in)
✓	Height:	23.5mm (0.93 in)	23.5mm (0.93 in)
✓	Weight:	10kg (22.3 lb)	4.1kg (9.1 lb)
✓	Weight / Area:	17.6kg/m² (3.6 lb/ft²)	18kg/m² (3.7 lb/ft²)

Two panels nested

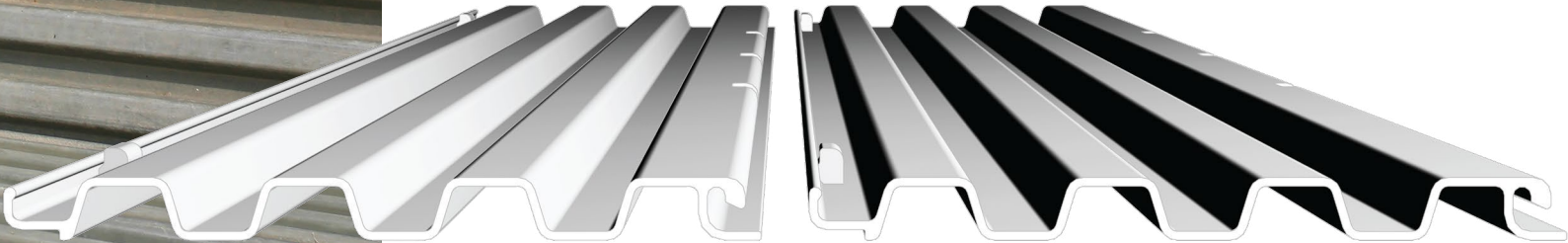




PSA TRACKWAY®

PSA Trackway® is supplied painted for durability and protection from corrosion. Originally developed for the UK Armed Forces over 50 years ago, the original landing mat panel can be transported by land, sea or air in either stillages or 463L pallets. Most suited for landing and take-off for fixed and rotary wing aircraft, the PSA Trackway® panel is lightweight, versatile and can be deployed with ease.

		Full Panel	Half Panel
✓	Width:	2,740mm (9ft)	1,370mm (4ft 5in)
✓	Overall Length:	269mm (10.6in)	269mm (10.6in)
✓	Effective Length:	251mm (9.9in)	251mm (9.9in)
✓	Height:	22.2mm (0.87in)	22.2mm (0.87in)
✓	Weight:	9.51kg (21lb)	4.76kg (10.5lb)
✓	Weight / Area:	13.82kg/m ² (2.8lb/ft ²)	13.82kg/m ² (2.8lb/ft ²)



S46H TRACKWAY®

The S46 Trackway® solution is a robust, aluminium panel which provides aircraft with a safe area for landing, take-off, parking and taxiing. More suited to long-term operations, S46 Trackway® is easily and rapidly deployed with minimal manpower. Its multi-purpose use means it is the ideal solution for vehicle access ways. Palletised in kit form, and delivered to your chosen site, the panels are supplied with an anti-skid paint finish.

		Full Panel	Half Panel
✓	Width:	1,060mm (3.5ft)	1,060mm (3.5ft)
✓	Length:	2,122.5mm (7ft)	1,060mm (3.5ft)
✓	Height:	30mm (1.18in)	30mm (1.18in)
✓	Weight:	50.85kg (112lb)	25.85kg (57lb)
✓	Weight / Area:	22.6kg/m ² (4.63lb/ft ²)	22.6kg/m ² (4.63lb/ft ²)





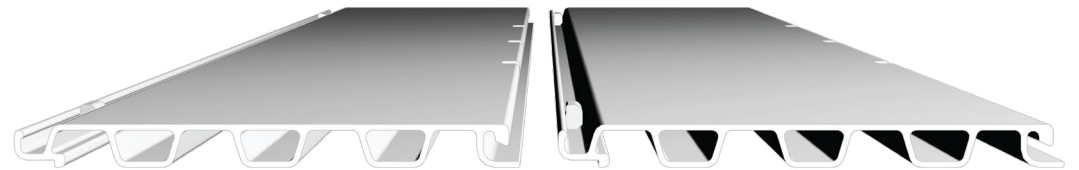
ADDITIONAL TRACKWAY® OPTIONS

■ PSA FLAT TOP TRACKWAY®

Developed for the Australian Armed Forces, PSA Flat Top Trackway® has been tried and tested by the Engineer Research and Development Centre within the US Army.

■ PSA FLAT TOP REINFORCED TRACKWAY®

Featuring reinforced edging for enhanced durability, the PSA Flat Top Reinforced Trackway® panel has been tried and tested by the Engineer Research and Development Centre within the US Army.



PSA Flat Top Trackway®



PSA Flat Top Reinforced Trackway®



FAUN Trackway Limited

Member of the KIRCHHOFF Group

Unit 6, Bryn Cefni Industrial Estate
Llangefni, Anglesey
North Wales
LL77 7XA, UK

Tel: +44 (0) 1248 722 777
Fax: +44 (0) 1248 750 490

info@fauntrackway.co.uk
www.fauntrackway.co.uk

Images for Illustration Purposes Only