



HELICOPTER

LANDING MAT

Rapidly deployed and multi-purpose



TRACKWAY® SOLUTIONS

The Helicopter Landing Mat system allows expeditionary forces create safe landing, servicing, parking and take-off areas for all types of helicopters within an array of environments and operations. The system suppresses sand, dust and foreign objects, ensuring pilot and crew safety as well as asset protection. Originally developed for the UK Royal Engineers in the 1960's, the durable solution can be manufactured to any size requirement; used for as little as a day or as a permanent installation, and is available in a variety of panel profiles. All systems are suitable for Light Observation Helicopters, Light Utility Helicopters, Anti-Tank Helicopters, Attack Helicopters, Light Support Helicopters, Medium Support Helicopters, Medium Lift Utility, Air Assault, Tactical Transport Helicopter, and Heavy Multi-Role Helicopters.

CAPABILITIES & SPECIFICATION

Aluminium panels, joined together to any size requirement;

Simple ground anchoring procedure;

Provides temporary or semi-permanent matting;

Ensures ground / environmental protection;

Prevents Foreign Object Damage (FOD);

Alleviates brown out by suppressing dust and airborne debris;

Easily and safely deployed and recovered at speed;

Lightweight but durable;

Easily transportable;

Facilitates multiple landings at the same location;

Designed to be constantly reused for multi-purpose operations;

Withstands ambient temperatures ranging from -40°C to +60°C;

Anodised as standard;

Easily cleaned and repaired;

Long operational life, 100% recyclable and has residual value;

Corrosion, fire, UV and glare resistant;

Foot protection is required for walking on all Trackway® aluminium products.



PSA FLAT TOP N TRACKWAY®

PSA Flat Top N Trackway®'s innovative design allows two panels to be stacked into a combined state of 1.1in; allowing for an increased square footage, due to the unique nesting function. Transportable on 463L pallets, in ISO Containers, or the Multi Role Packaging solution, the panel is supplied anodised for durability and protection from corrosion; and an anti-skid finish ensures the surface is of the highest traction for asset and personnel safety. Suitable for landing, take-off, servicing and maintenance, its flat surface makes the ideal solution for helicopter parking zones, and its structurally sound yet flexible foundation ideal for supporting VTOL / STOVL operations.

| | Full Panel | Edge Panel |
|----------------------------|-----------------------|---------------------|
| ✓ Width: | 2,255mm (7ft 4½ in) | 890mm (2ft 11in) |
| ✓ Overall Length: | 265mm (11in) | 265mm (11in) |
| ✓ Effective Length: | 255mm (10in) | 255mm (10in) |
| ✓ Height: | 23.5mm (0.93in) | 23.5mm (0.93in) |
| ✓ Weight: | 10kg (22.3lb) | 4.1kg (9.1lb) |
| ✓ Weight / Area: | 17.6kg/m² (3.6lb/ft²) | 18kg/m² (3.7lb/ft²) |



Patent pending

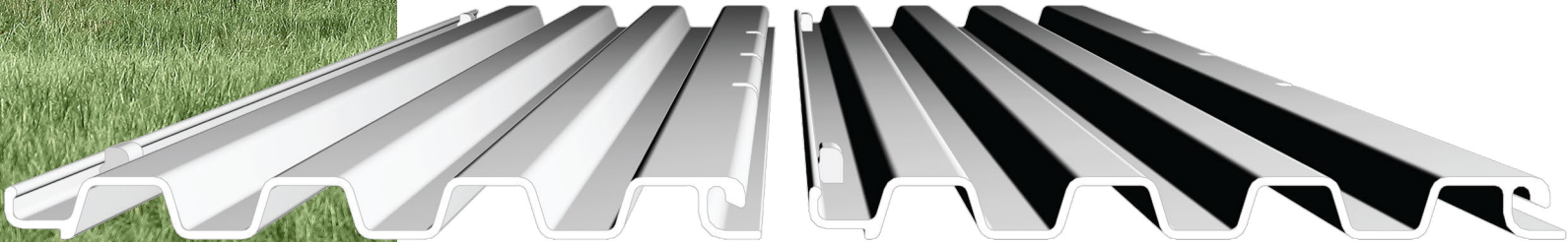
Two panels nested



PSA TRACKWAY®

PSA Trackway® is supplied painted for durability and protection from corrosion. Originally developed for the UK Armed Forces over 60 years ago, the original landing mat panel can be transported by land, sea or air in either stillages or 463L pallets. Most suited for landing and take-off for fixed and rotary wing aircraft, the PSA Trackway® panel is lightweight, versatile and can be deployed with ease.

| | | Full Panel | Half Panel |
|---|-------------------|---|---|
| ✓ | Width: | 2,740mm (9ft) | 1,370mm (4ft 5in) |
| ✓ | Overall Length: | 269mm (10.6in) | 269mm (10.6in) |
| ✓ | Effective Length: | 251mm (9.9in) | 251mm (9.9in) |
| ✓ | Height: | 22.2mm (0.87in) | 22.2mm (0.87in) |
| ✓ | Weight: | 9.51kg (21lb) | 4.76kg (10.5lb) |
| ✓ | Weight / Area: | 13.82kg/m ² (2.8lb/ft ²) | 13.82kg/m ² (2.8lb/ft ²) |



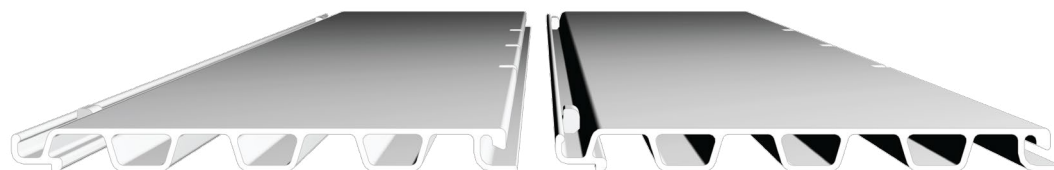
ADDITIONAL TRACKWAY® OPTIONS

■ PSA FLAT TOP TRACKWAY®

Developed for the Australian Armed Forces, PSA Flat Top Trackway® has been tried and tested by the Engineer Research and Development Centre within the US Army.

■ PSA FLAT TOP REINFORCED TRACKWAY®

Featuring reinforced edging for enhanced durability, the PSA Flat Top Reinforced Trackway® panel has been tried and tested by the Engineer Research and Development Centre within the US Army.



PSA Flat Top Trackway®



PSA Flat Top Reinforced Trackway®



PLAY VIDEO





MULTI ROLE PACKAGING SOLUTION

Problematic and challenging ground conditions can affect the safe landing and take-off of helicopters in all types of climates. To aid expeditionary forces to facilitate such operations, our innovative Multi-Role Packaging solution transports and stores our Helicopter Landing Mat, ready for a rapid deployment. Based on a 10ft ISO container which can be transported by land, sea or air, the solution enables expeditionary, humanitarian and relief personnel to access all of the equipment and tools necessary to build a helipad. Once the helipad has been deployed, the solution can be used as an operational base; fitted with power, lighting and air conditioning, as well as having room for sleeping spaces, storage and furniture. Compatible with both the PSA Flat Top N, PSA Flat Top, and PSA Flat Top Reinforced Trackway® panel variants; all designed to create stable, temporary landing surfaces capable of being laid in varying configurations to accommodate different helicopters.



OFFICE



CLINIC



LOGISTICS CENTRE



AID DISTRIBUTION CENTRE



ACCOMMODATION



BREAK ROOM



FACILITIES



SECURE STORAGE



FAUN Trackway Limited

Member of the KIRCHHOFF Group

Unit 6, Bryn Cefni Industrial Estate
Llangefni, Anglesey
North Wales
LL77 7XA, UK

Tel: +44 (0) 1248 722 777

Fax: +44 (0) 1248 750 490

info@fauntrackway.co.uk

www.faustrackway.co.uk

Images for Illustration Purposes Only

Registered in England and Wales 09283749

All content © FAUN Trackway Limited 2023. All Rights Reserved